



FIG. 32.—Microcephalic imbecile; a tolerably good worker in the wards. Head circumference, 17 inches.

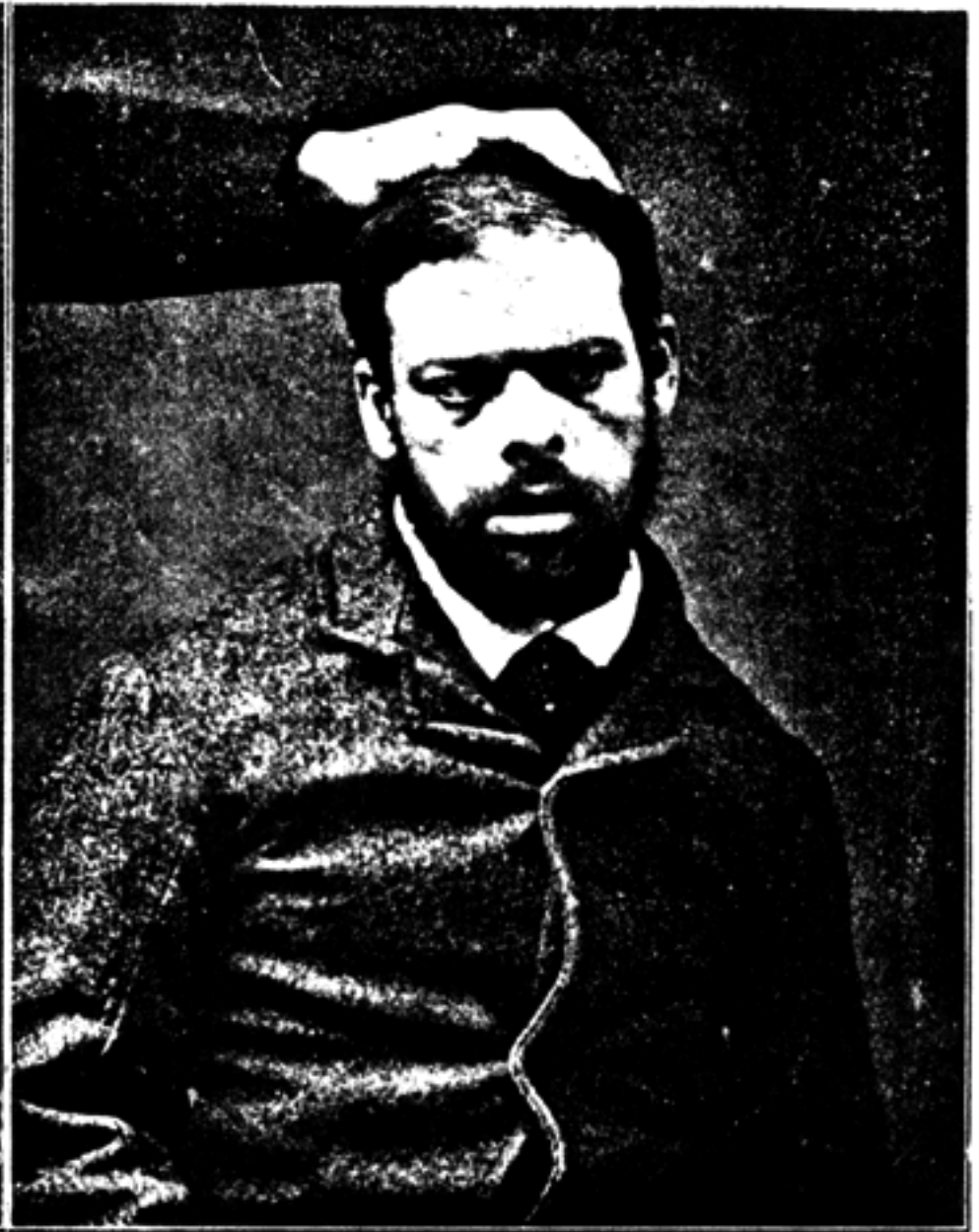


FIG. 25.—A pronounced imbecile. Idle, destructive, and at times aggressive; subject to frequent epileptic fits.



FIG. 24.—A mischievous, restless, and destructive imbecile of semi-Mongolian type; usually grimacing as shown.



FIG. 31.—Microcephalic imbecile, also subject to epilepsy. Head circumference, 18 $\frac{7}{8}$ inches.